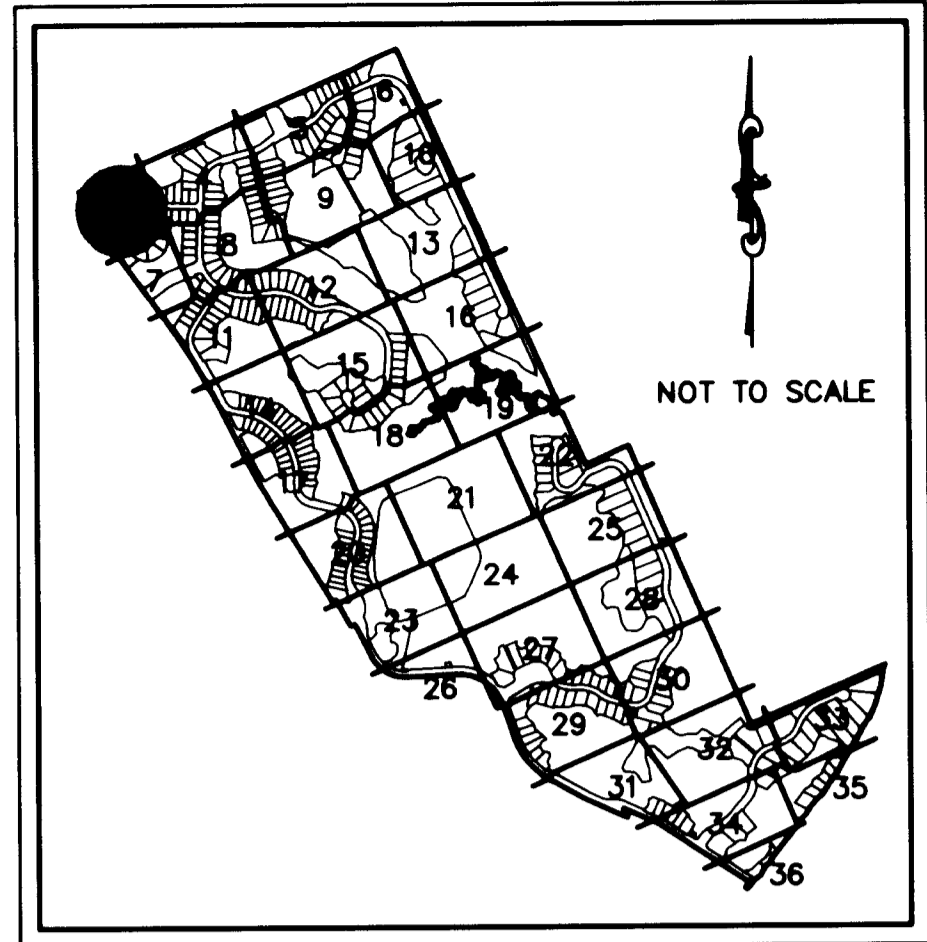
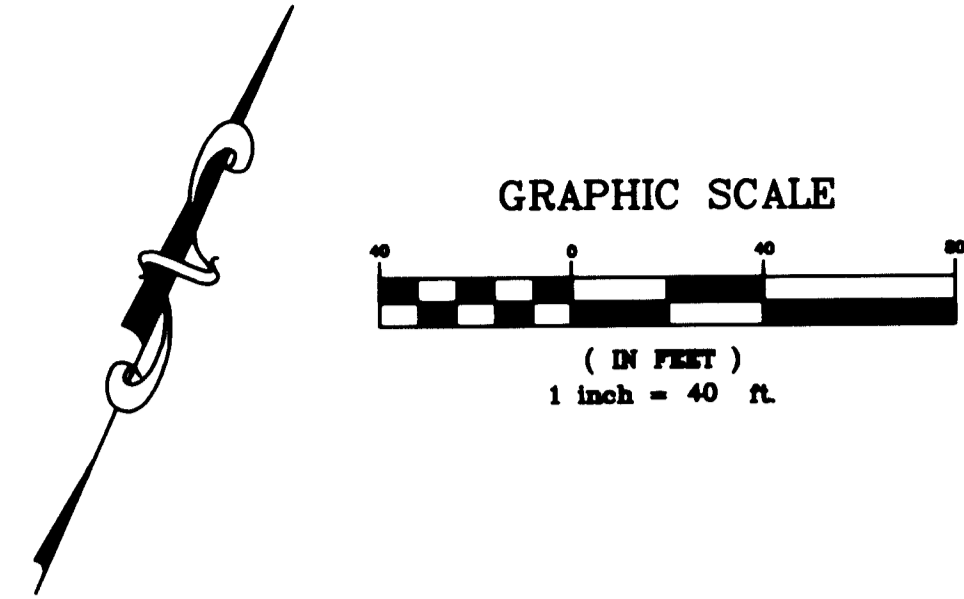


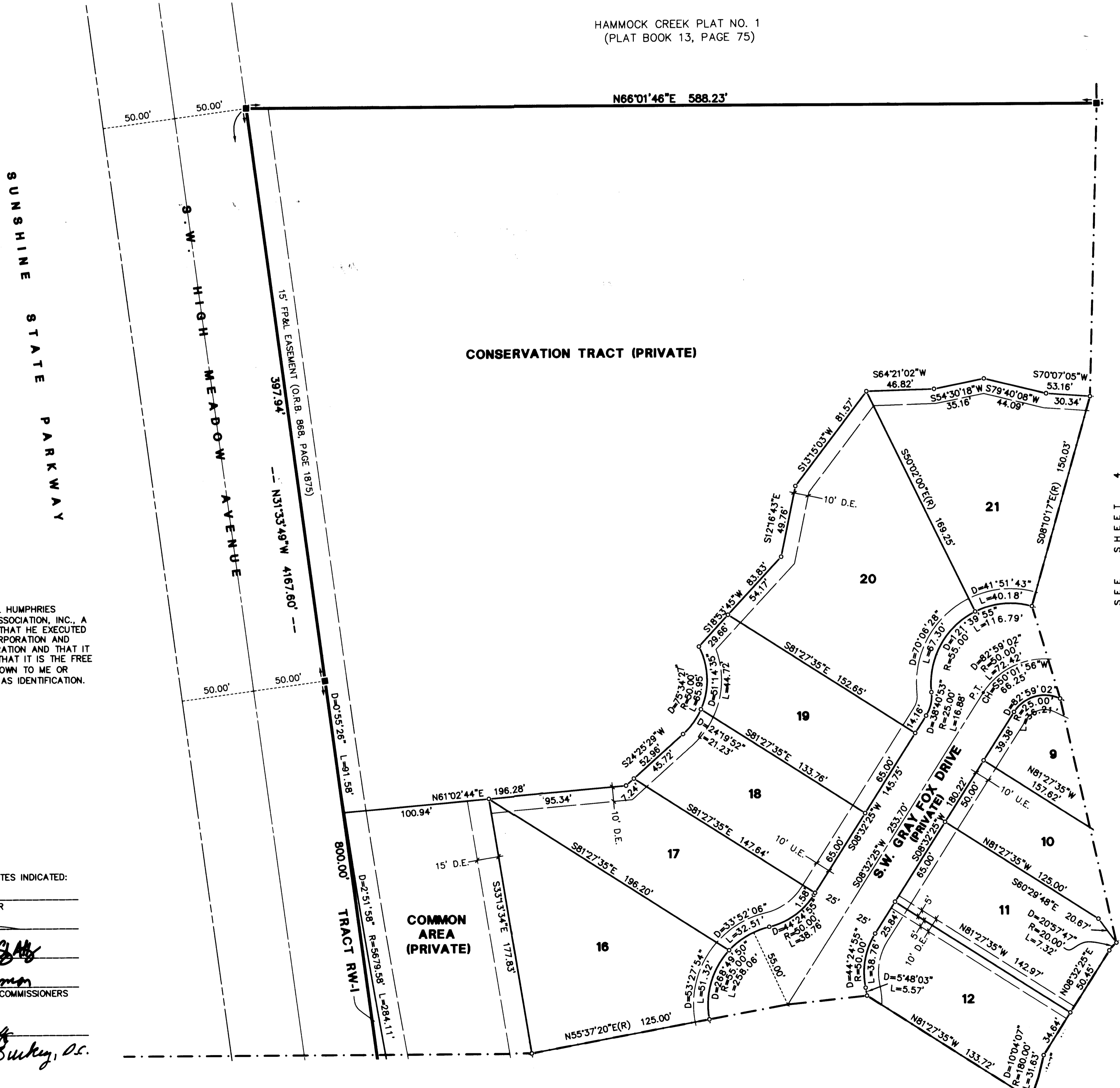
Highlands Reserve P.U.D.

Being a portion of the Miles or Hanson Grant, as recorded in Plat Book 1, Page 11, public records of Dade (now Martin) County, Florida and being a replat of a portion of St. Lucie Inlet Farms, as recorded in Plat Book 1, Page 98, public records of Palm Beach (now Martin) County, Florida.



SHEET INDEX

HAMMOCK CREEK PLAT NO. 1
(PLAT BOOK 13, PAGE 75)



LEGEND

- = SET PERMANENT CONTROL POINT (PCP) PARKER KALON NAIL & WASHER, LABELED "PCP GCY LB 4108"
- = SET 3/4" IRON PIPE WITH YELLOW CAP LABELED, "GCY, INC. LB 4108"
- = SET PERMANENT REFERENCE MONUMENT (PRM) 4"x4" CONCRETE MONUMENT WITH DISK LABELED, "GCY INC. P.R.M. LB 4108, PSM 4864"
- D = DELTA (CENTRAL ANGLE)
- L = ARC LENGTH
- R = RADIUS
- CH = CHORD BEARING AND LENGTH
- D.E. = DRAINAGE EASEMENT (PRIVATE)
- FP&L = FLORIDA POWER & LIGHT COMPANY
- LB = LAND SURVEY BUSINESS
- L.B.E. = LANDSCAPE BUFFER EASEMENT
- NGVD = NATIONAL GEODETIC VERTICAL DATUM
- O.R.B. = OFFICIAL RECORD BOOK
- P.C. = POINT OF CURVATURE
- P.C.C. = POINT OF COMPOUND CURVATURE
- P.I. = POINT OF INTERSECTION
- P.R.C. = POINT OF REVERSE CURVATURE
- PSM = PROFESSIONAL SURVEYOR AND MAPPER
- P.T. = POINT OF TANGENCY
- PUD = PLANNED UNIT DEVELOPMENT
- (R) = RADIAL LINE
- U.E. = UTILITY EASEMENT

- SURVEYOR'S NOTES**
- 1) THIS PLAT, AS RECORDED IN ITS ORIGINAL FORM IN THE PUBLIC RECORDS, IS THE OFFICIAL DEPICTION OF THE SUBDIVIDED LANDS DESCRIBED HEREON AND WILL IN NO CIRCUMSTANCES BE SUPPLANTED IN AUTHORITY BY ANY OTHER FORM OF THIS PLAT, WHETHER GRAPHIC OR DIGITAL.
 - 2) THERE MAY BE ADDITIONAL RESTRICTIONS THAT ARE NOT RECORDED ON THIS PLAT THAT MAY BE FOUND IN THE PUBLIC RECORDS OF THIS COUNTY.
 - 3) IT SHALL BE UNLAWFUL TO ALTER THE APPROVED SLOPES, CONTOURS, OR CROSS SECTIONS OR TO CHEMICALLY, MECHANICALLY, OR MANUALLY REMOVE, DAMAGE, OR DESTROY ANY PLANTS IN THE LITTORAL OR UPLAND TRANSITION ZONE BUFFER AREAS OF CONSTRUCTED LAKES EXCEPT UPON THE WRITTEN APPROVAL OF THE GROWTH MANAGEMENT DIRECTOR, AS APPLICABLE. IT IS THE RESPONSIBILITY OF THE OWNER OR PROPERTY OWNERS ASSOCIATION, ITS SUCCESSORS OR ASSIGNS TO MAINTAIN THE REQUIRED SURVIVORSHIP AND COVERAGE OF THE RECLAIMED UPLAND AND PLANTED LITTORAL AND UPLAND TRANSITION AREAS AND TO ENSURE ON-GOING REMOVAL OF PROHIBITED AND INVASIVE NON-NATIVE PLANT SPECIES FROM THESE AREAS.
 - 4) CONSERVATION TRACT (PRIVATE)S SHALL BE PROTECTED FROM EXCAVATION, CONSTRUCTION AND OTHER BUILDING MAINTENANCE ACTIVITIES.
 - 5) BEARINGS SHOWN HEREON ARE REFERENCED TO THE SOUTH LINE OF HAMMOCK CREEK PLAT NO. 1 (PLAT BOOK 13, PAGE 75). SAID LINE BEARS NORTH 66°1'46" EAST.

Acknowledgment

BEFORE ME, THE UNDERSIGNED NOTARY PUBLIC, APPEARED MICHAEL HUMPHRIES PRESIDENT OF HIGHLANDS RESERVE OF PALM CITY HOMEOWNERS' ASSOCIATION, INC., A FLORIDA NON-FOR-PROFIT COPORATION, AND HE ACKNOWLEDGED THAT HE EXECUTED SUCH ACCEPTANCE OF DEDICATIONS AS SUCH OFFICER OF SAID CORPORATION AND THAT THE SEAL AFFIXED IS THE CORPORATE SEAL OF SAID CORPORATION AND THAT IT WAS AFFIXED BY DUE AND REGULAR CORPORATE AUTHORITY, AND THAT IT IS THE FREE ACT AND DEED OF SAID CORPORATION. HE IS (X) PERSONALLY KNOWN TO ME OR () HAS PRODUCED _____ AS IDENTIFICATION.

PRINT NAME: Amy Hetzel
NOTARY PUBLIC STATE OF: Florida
COMMISSION NO.: DD216806
MY COMMISSION EXPIRES: May 28, 2007

County Approval

THIS PLAT IS HEREBY APPROVED BY THE UNDERSIGNED ON THE DATES INDICATED:
DATE: 09-14-05 COUNTY SURVEYOR AND MAPPER
DATE: 09-14-05 COUNTY ENGINEER
DATE: 9/23/05 COUNTY ATTORNEY
DATE: 9-23-05 CHAIRMAN, BOARD OF COUNTY COMMISSIONERS
ATTEST: Manisha Cwing CLERK
By Charlotte Siskey, Jr.

SEE SHEET 7

SEE SHEET 4

Job Number 04-1020-01
Licensed Business #4108

GCY
INCORPORATED
PROFESSIONAL SURVEYORS AND MAPPERS
CERTIFICATE OF AUTHORIZATION LB 4108
CORPORATE OFFICE: TALLAHASSEE OFFICE
PO BOX 1489 • 1505 SW MARTIN HWY. 4905 N. MONROE STREET
PALM CITY, FL 34991 TALLAHASSEE, FL 32303
(800) 366-1066 (850) 536-8455